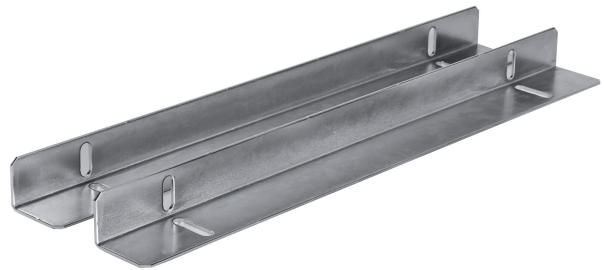


AR 1050

RACK LATERAL SUPPORT

DESCRIPTION

1 unit accessory for installation in RCF CR2600 series racks.



FEATURES

- 1 unit accessory for installation in RCF CR2600 series racks

**TECHNICAL SPECIFICATIONS**

| | | |
|--------------------------------|------------------------|-----------------------|
| Standard compliance | CE marking: | Yes |
| Physical specifications | Cabinet/Case Material: | Metal |
| Size | Weight: | 0.85 kg / 1.87 lbs |
| Shipping informations | Package Height: | 40 mm / 1.57 inches |
| | Package Width: | 425 mm / 16.73 inches |
| | Package Depth: | 70 mm / 2.76 inches |
| | Package Weight: | 0.9 kg / 1.98 lbs |

PART NUMBER

- **17360039**

AR1050