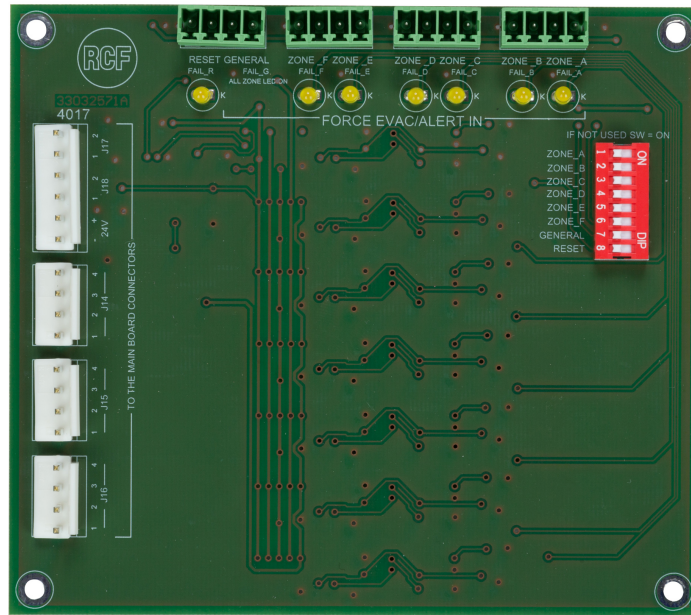




MG 3006

MONITORED GPI BOARD



Description

MG 3006 is an additional board for DXT 3000 master units. It allows monitoring system's General Purpose Inputs (GPI), detecting and reporting open line faults or short circuits along the path between DXT 3000 and other emergency devices, such as alarm buttons. It shall be installed inside the master unit, and powered directly by the system.

Standard compliance Size / Weight

Safety agency CE compliant
Weight 0.15 kg / 0.33 lbs

Part Number 13360344 MG 3006

EAN 8024530013356

Technical Specifications

Products are continually improved. All specifications are therefore subject to change without notice.